



Overview

Region

Washington

Industry

Government

Customer Profile

The Washington Department of Natural Resources Northwest Region encompasses over 3,000 miles of roads and 1,700 stream culverts.

The Northwest Region team focuses on stream restoration, culvert maintenance, roadside maintenance, storm debris removal and erosion control.

Business Situation

The Washington Department of Natural Resources needed a durable and versatile tilting solution to increase their productivity of their CAT 315 excavators and to improve the appearance of their finished projects.

Solution

The Northwest Region team of the Washington Department of Natural Resources purchased two PowerTilt Versatile Swing Attachments for their fleet which dramatically decreased their need to reposition their excavators and netted them a 100 percent increase in productivity across a broad spectrum of applications.

Helac PowerTilt Application Success Story

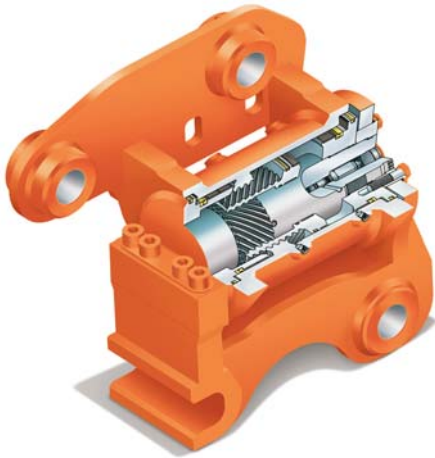
Washington Department of Natural Resources Doubled Their Productivity After Adding PowerTilt Versatile Swing Attachment to Their Fleet

“Helac’s PowerTilt Versatile Swing Attachment has allowed us to double our productivity and produce a better finished result, across a broad range of tasks.”

— Scott Minkler, Supervisor, Washington Department of Natural Resources

Scott Minkler, Supervisor of the Washington Department of Natural Resources Northwest Region is diligent about maximizing the productivity of his team. With a mandate to restore and preserve streams used by native fish populations which circumnavigate over 3,000 miles of roads and 1,700 stream culverts, it’s easy to see why it’s mission critical to be efficient and productive in every activity. Accordingly, when Minkler heard about the success that other branches of the Washington Department of Natural Resources were having





“We had previously used a conventional bucket and thumb combination to complete our projects around the job site — after adding PowerTilt, I now get a better finished appearance in half the time. PowerTilt is easily my favorite tool on the job.”



— Tony Holt, Operator
Washington Dept of
Natural Resources

with PowerTilt, he couldn't wait to try out the rugged attachment manufactured by Helac Corporation.

Minkler was quickly impressed, “Helac's PowerTilt Versatile Swing Attachment has allowed us to double our productivity and produce a better finished result, across a broad range of tasks. Our equipment operators were frequently repositioning the



machine, building benches, doing nearly everything imaginable to get at the right angle for the job prior to using a tilting attachment. Now our equipment operators can just work from the road surface and use the PowerTilt to adjust the angle of the attachment instead of moving the entire excavator around.” Tony Holt, Equipment Operator agrees, “We had previously used a conventional bucket and thumb combination to complete our projects around the job site —

after adding PowerTilt, I now get a better finished appearance in half the time. PowerTilt is easily my favorite tool on the job.”

Multiple Tasks from a Single Attachment

With such a daunting workload, it was clear to the Washington DNR that they needed to maximize the productivity of their machine. Accordingly, PowerTilt has remained on their excavators 100 percent of the time, year-round. PowerTilt is used

“I believe that every equipment operator would want a PowerTilt if they tried it. Our team is twice as productive with PowerTilt — we’d come unglued without this attachment!”

— Tony Holt, Operator
Washington Department of
Natural Resources

for a whole host of tasks throughout the stream restoration and roadside maintenance process.

1. Slope Stabilization: PowerTilt allows the equipment operator to flatten slope angles to reduce surface erosion and provide favorable ground to establish vegetation without repositioning the machine, which can be destructive to fragile riparian habitats.
2. Ditch Maintenance: The PowerTilt allows the team to efficiently cut the perfect angles for optimal drainage as well as remove any debris from the ditch with minimal machine movement.
3. Sidecast Removal: The equipment operator efficiently uses PowerTilt to position the bucket for optimum removal of unwanted sidecast more productively and without disturbing the native habitat.

A Durable and Versatile Solution

“We’re working in a rugged, tough environment everyday and



we need tools that are up to the challenge,” explains Holt. PowerTilt is just the right tool for the job. In over 4,500 hours with PowerTilt, the Northwest Region team has never had a problem. PowerTilt skips seamlessly between all

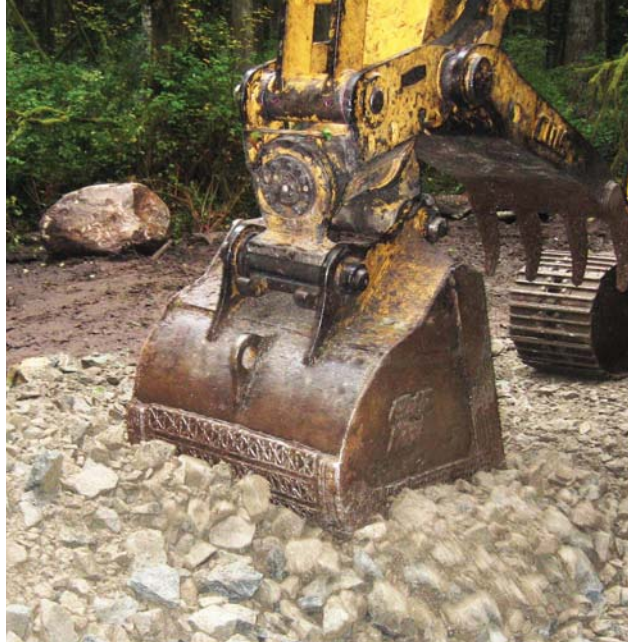
tasks and in every situation saves time and provides a better job outcome. Holt went on to explain, “I believe that every equipment operator would want a PowerTilt if they tried it. Our team is twice as productive with PowerTilt — we’d come unglued without this attachment!”

For More Information

For more information about Helac Corporation's construction equipment attachments, call 800.797.8458. To access information using the World Wide Web, go to: www.helac.com.

An All-Weather Attachment

Over a decade of innovation and engineering has gone into making PowerTilt an integral solution for work site efficiency. PowerTilt is specifically engineered to work with a variety of attachments, improving your machine's versatility. PowerTilt is compatible with wide buckets, brushcutters, narrow buckets,



hydraulic hammers, rippers and mowers — just to name a few. PowerTilt's versatility and durability has allowed the Northwest Region team to keep it on their machine 100 percent of the time, year-round. Minkler explains, "my team isn't shy about telling me which tools aren't holding up to our demanding

requirements — and I can tell you that without a doubt the PowerTilt is the only tool we use that we are truly satisfied with. It's the perfect solution for our requirements."

PowerTilt is available for equipment up to 75,000 lbs in eight sizes with standard rotation of up to 180 degrees. Each model is engineered for a specific class of machinery and individually customized to fit your machine.



Helac Corporation
225 Battersby Avenue
Enumclaw, WA 98022 USA

U.S. and Canada: 800.797.8458
Worldwide: 360.802.1039
Fax: 360.802.1030
Email: attachments@helac.com
Web: www.helac.com